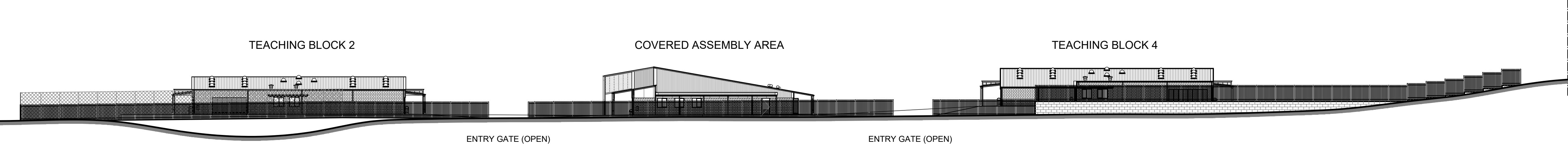


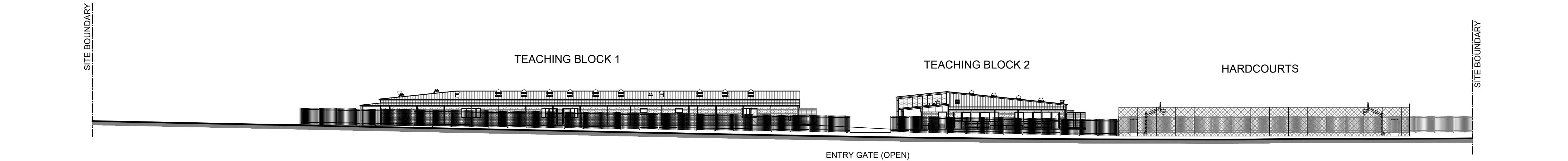
1 NORTH ELEVATION
BBPA11P7

VIEW FROM NORTHERN FENCELINE



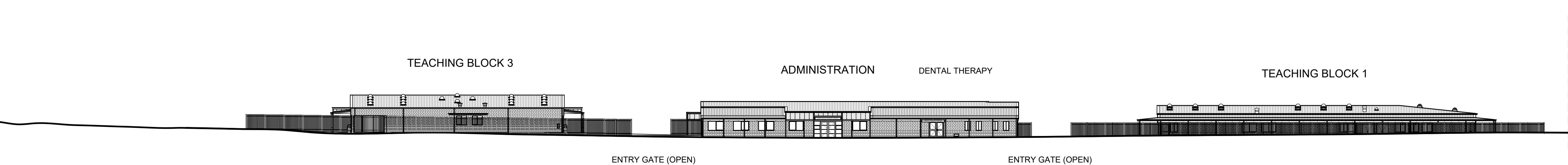
2 EAST ELEVATION
BBPA11P7

VIEW FROM OVAL



3 SOUTH ELEVATION
BBPA11P7

VIEW FROM BURNS BEACH RD



4 WEST ELEVATION
BBPA11P7

VIEW FROM WATCOMBE AVE

REVISION SCHEDULE		
NO.	DATE	DESCRIPTION
A	01.05.20	ISSUE FOR JDAP
B	18.05.20	DESIGN DEVELOPMENT ISSUE
C	21.08.20	TENDER ISSUE

FINISHES LEGEND

- LIMESTONE BLOCK RETAINING WALL
- DOUBLE HEIGHT COURSE BRICKWORK -PRIMARY FINISH
- DOUBLE HEIGHT COURSE BRICKWORK -BAND FINISH
- KLIPLOCK COLURBOND ROOF SHEET 'SURF MIST'
- COLOURED TRANSLUCENT DANPALON SHEETS
- GARRISON FENCING MARINE GRADE POWDERCOAT, COLOUR AS SPECIFIED, ~2100mm HIGH
- RUBBER COATED CHAIN LINK FENCE ~3600mm HIGH

Tender number BMW 0034320
Project Number BMW 14766
Tender File Number RFT 2020/00343

TENDER

Cox Architecture
360 Murray Street
Perth WA 6000 Australia
Telephone +61 8 9322 3644
Facsimile +61 8 9322 1664
perth@cox.com.au
www.cox.com.au

COX

- CONSULTANTS

STRUCTURAL, MECHANICAL
Wood & Grieve Engineers
Ground Floor, 226 Adelaide Terrace
Perth WA 6000

CIVIL
Pritchard Francis
45 Roberts Road
Subiaco WA 6008

ELECTRICAL
BEST Consultants
578 Newcastle Street
West Perth WA 6005

HYDRAULIC
SPP Group
Level 2, 553 Hay Street,
Perth WA 6000
- LANDSCAPE
Plan E
414 Rokeby Road
Subiaco WA 6008

BUILDING SURVEYOR
John Massey Group
85 The Promenade
Mt Pleasant WA 6153

ESD, ACOUSTIC
Gabriels Hearn Farrell
Unit 3, 2 Hardy Street
South Perth WA 6151

TRAFFIC
Cardno
11 Harvest Terrace
West Perth WA 6872

Government of Western Australia
Department of Finance

BURNS BEACH PRIMARY SCHOOL
SITE ELEVATIONS

DRAWN	CW	DESIGNED	MB	REDUCTION	
CHECKED	JC	PRINCIPAL		0 1 3 5 10m	
APPROVED	MB				
SCALE	REFER TO SCALE BAR	DATE	21/08/2020	Job No 619155	REV
BMW TENDER No	2020/XXXXX	BMW FILE No	BMW 14766	DRAWING No	BBPA14E7
					C

THIS IS A CADD DRAWING DO NOT AMEND MANUALLY